

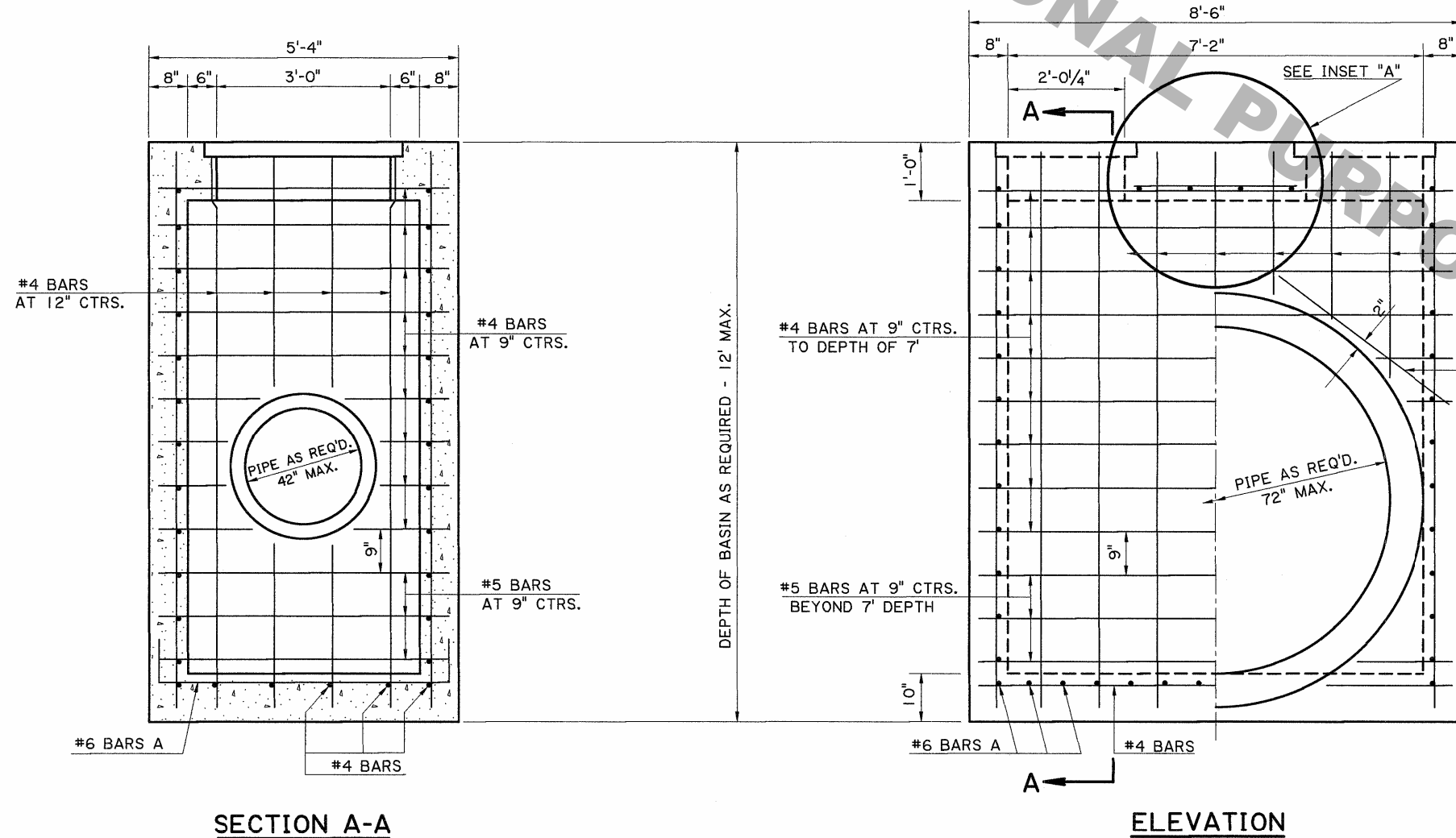
SECTIONAL PLAN
(SHOWING BOTTOM SLAB & WALLS)

PLAN

*GRATE TO BE TYPE "B" OR "C".
TYPE "B" SHOWN.
(SEE GENERAL NOTES.)

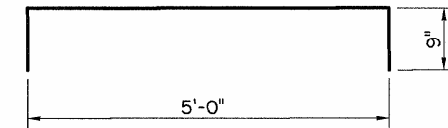
GENERAL NOTES:

- 1) THIS CATCH BASIN SHOULD ONLY BE USED OUTSIDE OF THE TRAVEL LANE.
- 2) CATCH BASIN IS DESIGNED ACCORDING TO 4TH ED. 2007 AASHTO LRFD PROCEDURES. SECTION 702 OF THE CURRENT DOTD STANDARD SPECIFICATIONS SHALL APPLY.
- 3) REINFORCING STEEL SHALL BE GRADE 60. DIMENSIONS ARE TO BAR CENTERS. MINIMUM COVER FOR REINFORCING BARS SHALL BE 2 IN. CLEAR UNLESS SHOWN OTHERWISE.
- 4) PIPE SIZE AND LOCATION VARIES. CUT REINFORCING STEEL TO CLEAR, AS REQUIRED.
- 5) TYPE "B" GRATE IS TO BE USED WHERE NO PEDESTRIAN TRAFFIC AND NO VEHICULAR TRAFFIC IS EXPECTED. (DITCHES, ETC.)
- 6) TYPE "C" GRATE IS TO BE USED WHERE PEDESTRIAN TRAFFIC AND/OR LIGHT VEHICULAR TRAFFIC IS EXPECTED. (DRIVEWAYS, SHOULDERS, ETC.)
- 7) FOR DETAILS OF GRATE AND SEAT, SEE STD. PLAN MC-01 (TYPE B OR C).
- 8) SEE PLANS FOR TYPE OF GRATE TO BE USED FOR EACH CATCH BASIN.

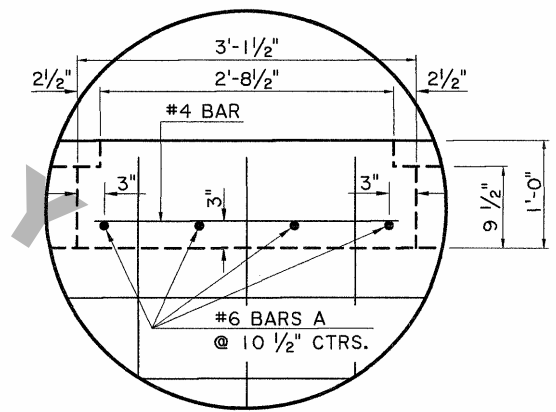


SECTION A-A

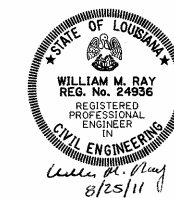
ELEVATION



#6 BARS A



INSET "A"



SHEET NUMBER		PARISH		DESIGNED		CHECKED		GMD	
PROJECT		FEDERAL PROJECT		DETAILED		CHECKED		KAJ	
STATE PROJECT		DATE		DATE		DATE		5-15-84	
PROJECT		SHEET		SHEET		SHEET		1 OF 1	
NO.		NO.		NO.		NO.		NO.	
8-25-11		1-17-06		3-23-98		WMM		JCM	
REDRAFTED, REV. TO AASHTO LRFD PROCEDURES.		NEW SHEET, GENERAL REVISIONS		SCANNED ORIGINAL & ADDED NAME		REVISION DESCRIPTION		BY	
3		2		1		WMM		JCM	
DOUBLE OPEN TOP CATCH BASIN		Max. Size: 7'-2" X 4'-0"		Max. Depth: 12'		To be used with Std. Plan MC-01		SPECIAL DETAIL	
HYDRAULICS SECTION		CB-2TOP02		CB-2TOP02		CB-2TOP02		CB-2TOP02	